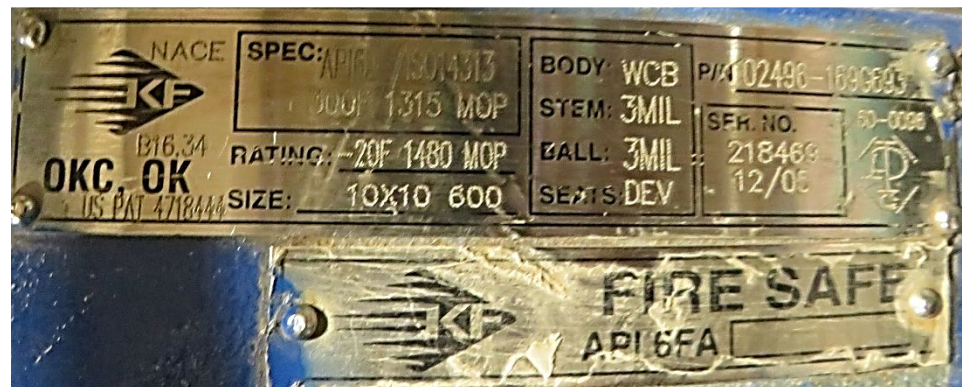
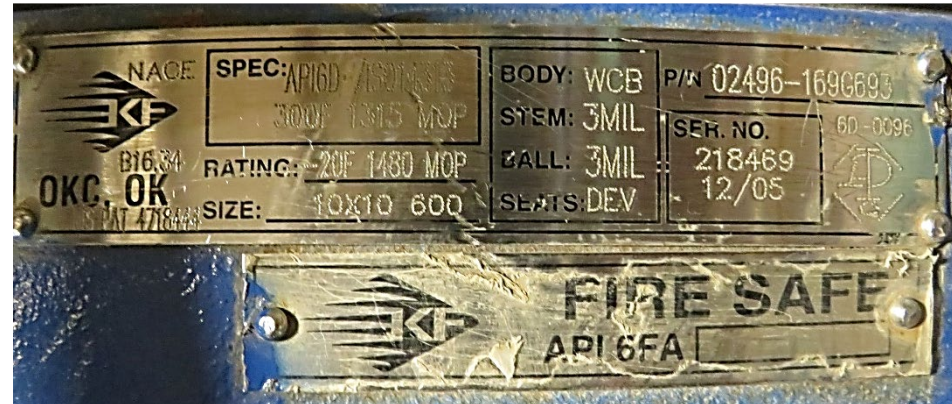
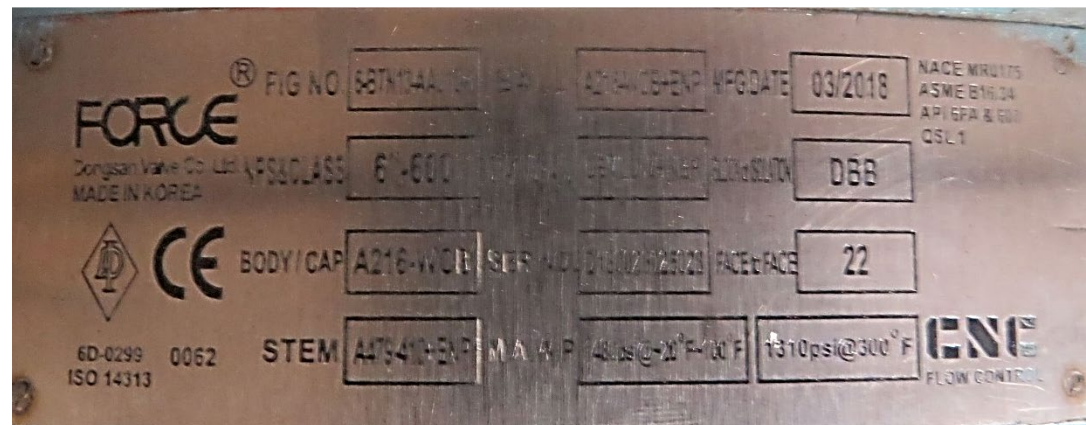
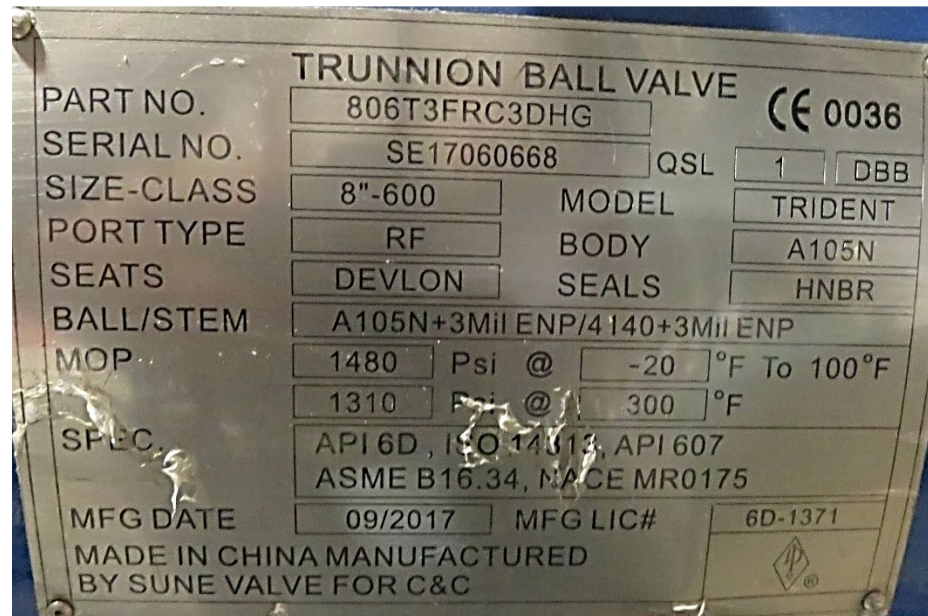


SLE 21-009 Pipeline & Equipment Valve Sale



SLE 21-009 Pipeline & Equipment Valve Sale



SLE 21-009 Pipeline & Equipment Valve Sale



SLE 21-009 Pipeline & Equipment Valve Sale



SLE 21-009 Pipeline & Equipment Valve Sale



SLE 21-009 Pipeline & Equipment Valve Sale



SLE 21-009 Pipeline & Equipment Valve Sale



SLE 21-009 Pipeline & Equipment Valve Sale



SLE 21-009 Pipeline & Equipment Valve Sale



SLE 21-009 Pipeline & Equipment Valve Sale



SLE 21-009 Pipeline & Equipment Valve Sale



SLE 21-009 Pipeline & Equipment Valve Sale



SLE 21-009 Pipeline & Equipment Valve Sale



SLE 21-009 Pipeline & Equipment Valve Sale



SLE 21-009 Pipeline & Equipment Valve Sale



DANGER • FLAMMABLE GAS UNDER PRESSURE • LEAKING LP-GAS MAY CAUSE A FIRE OR EXPLOSION IF IGNITED
• CONTACT LP-GAS SUPPLIER FOR REPAIRS OR DISPOSAL OF THIS CYLINDER OR UNUSED LP-GAS
• FOR OUTDOOR USE ONLY • DO NOT USE OR STORE CYLINDER IN A BUILDING, GARAGE OR ENCLOSED AREA

CUSTOMER WARNING:
 • Know the odor of LP-Gas. If you hear, see or smell leaking LP-Gas, immediately get everyone away from the cylinder and call the Fire Department. Do not attempt repairs.
 • Return your LP-Gas supplier to:
 • Be certain cylinder is purged of trapped air prior to first filling.
 • Be certain not to overfill the cylinder.
 • Be certain cylinder requalification date is checked.
 • LP-Gas is heavier than air and may settle in low places while dissipating.
 • Contact with the liquid contents of cylinder will cause freeze burns to the skin.
 • Do not allow children to tamper or play with cylinder.
 • When not connected for use, keep cylinder valve turned off. Self contained outdoor cooking appliances shall be limited to a cylinder of 20 lb. capacity or less.
 • Do not use, store or transport cylinder where it would be exposed to high temperatures. Relief valve may open allowing a large amount of flammable gas to escape.
 • When transporting, keep cylinder secured in an upright position with cylinder valve turned off.

WHEN CONNECTING FOR USE:
 • Use only in compliance with applicable codes.
 • Read and follow manufacturers' instructions.
 • Consult manufacturers' instructions concerning the cylinder connection provided with your appliance.
 • Be sure regulator vent is not pointing up.
 • Turn off all valves on the appliance.
 • Do not check for gas leaks with a match or open flame. Apply soapy water at areas marked "X". Open cylinder valve. If bubble appears, close valve and have LP-Gas service person make needed repairs. Also check appliance valves and connections to make sure they do not leak before lighting appliance.
 • Light appliance(s) following manufacturers' instructions.
 • When appliance is not in use, keep the cylinder valve closed.

DO NOT REMOVE, DEFACE OR OBLITERATE THIS LABEL I *EXCEPT AS AUTHORIZED BY ANSI/NFPA 58 or CAN/CGA-914.2
 NEVER store a spare LP cylinder under or near a barbecue grill, NEVER fill an LP cylinder beyond 80% full: a fire causing death or serious injury may occur.

Diagram Labels:
 CYLINDER VALVE HAND WHEEL
 POINT OF CONNECTION
 PRESSURE RELIEF VALVE
 CYLINDER
 LIQUID LEVEL INDICATOR (OPTIONAL)

QUESTIONS OR COMMENTS: 1-800-485-7838

